

UE System 1 Seat Two



Stainless steel seat with custom etching and perforations



Shot peened leg supports and brushed seat pan



Solid end also doubles as skateboard deterrent

TECHNICAL INFORMATION

A family suite of seating made from high quality materials providing comfort and strength. The seat is available in 1.5 and 2m lengths.

The standard seat frame is made from steel with all edges rounded off. Painted to any RAL colour. The seat pan is made from a single Iroko timber panel. Surface or below ground level fixing.

Options

Front edge LED illumination.
Optional timber type, and finish.
Seat pan in steel or stainless steel.
Stainless steel frame, finish to suit clients requirements.
A variety of backrest and arm rest configurations are available

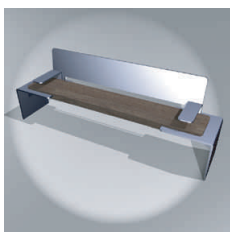
Seat Two

Code

1.5m seat timber back rest	ST-TBR-1.5
1.5m seat with steel back rest	ST-SBR-1.5
1.5m seat with stainless steel back rest	ST-SSBR-1.5
2m seat timber back rest	ST-TBR-2
2m seat with steel back rest	ST-SBR-2
2m seat with stainless steel back rest	ST-SSBR-2

Notes

Add 01 for open end leg supports and 02 for solid leg supports



ST-SBR-1.5-02

